

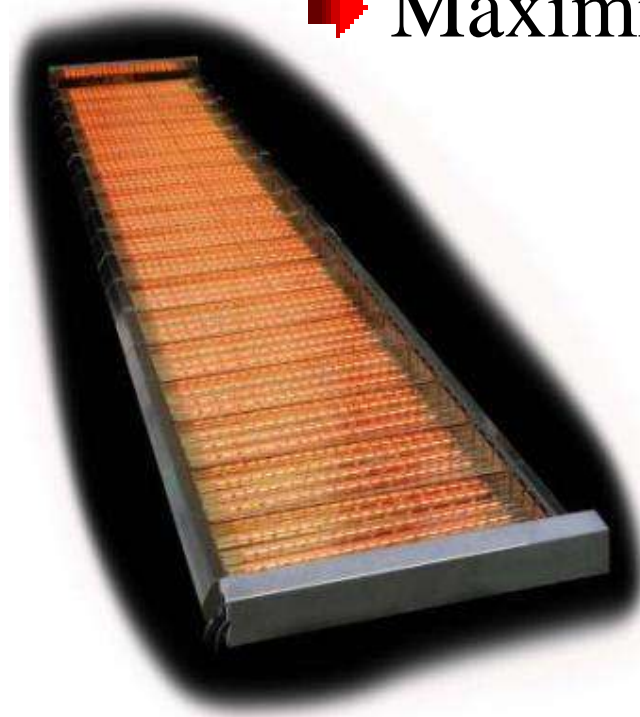


**ColorDry™**  
**XL3000** WITH SENTINEL™  
TECHNOLOGY

COLOR SELLS

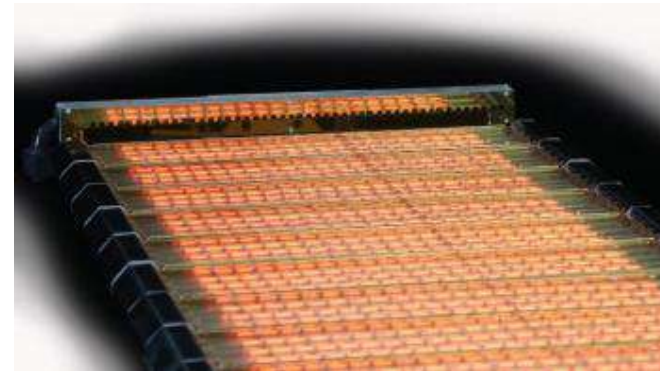
## *ColorDry XL3000*

➡ Ultimate Safety



➡ Maximized Productivity

➡ Optimized Quality



Safety & Performance

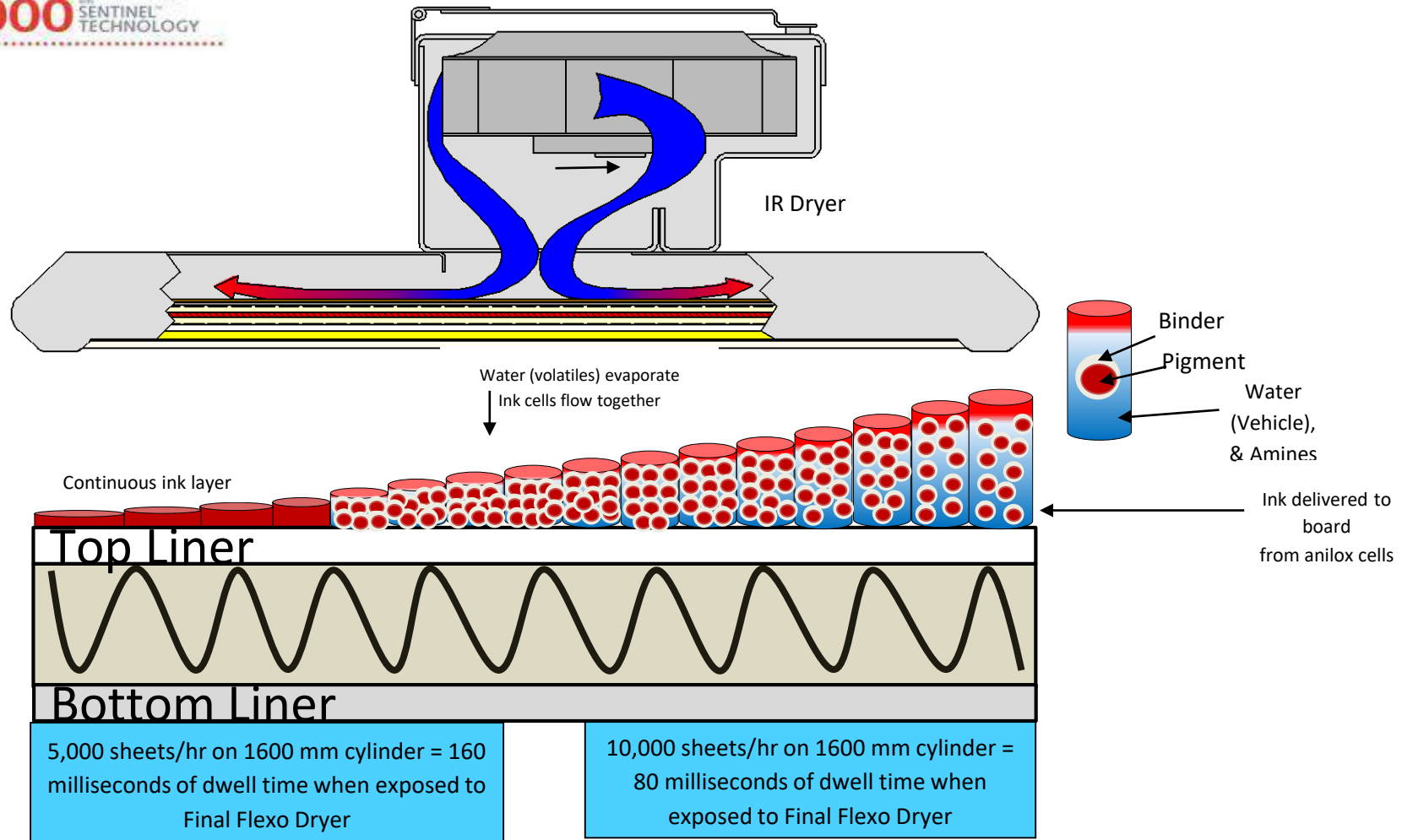




**ColorDry™**  
**XL3000** with SENTINEL TECHNOLOGY

So Why ColorDry XL3000 IR Dryers?

COLOR SELLS



Flexo inks dry by evaporation and unless this process is accelerated through the use of dryers, ink **will not** trap color on color and **will** mark when in line die cutting and or passing over stacker belts. Dryers accelerate the drying process, eliminating these issues, *optimizing printing quality and productivity*



COLOR SELLS

## So why ColorDry XL3000 IR dryers?

### THE SAFEST IR DRYER

- All surfaces below auto ignition temperature of paper.
- With Sentinel Technology

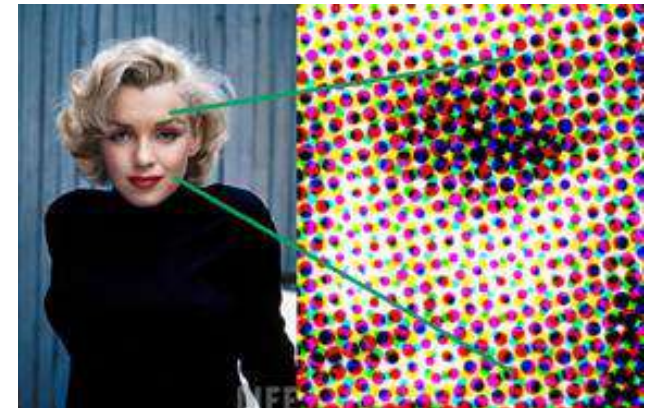


### THE HIGHEST PERFORMANCE IR DRYER

- High Speed Printing, Die Cutting and Finishing In a Single Pass.
- Improved ink on-press stability

### OPTIMIZED QUALITY

- Dry trapping for improved color brilliance and quality
- Minimized or eliminated tracking, marking, smearing & ghosting.
- Significant reduction of waste.





COLOR SELLS

Safe operation while leveraging the Power & Performance of high speed IR



Safety  
Performance

- Lamps off in less than 1-second
- Lamps on in less than 1-second

Safe Operating  
Temperatures

- All Surfaces below auto ignition temperature of paper
- Auto ignition Temp of Paper 217-246°C (424-475°F)

Prevention  
Inspection

- Sentinel – Automatic Sheet Detection
- Dryer Lead Edge Sheet Detection – Where appropriate
- VisionMaster - Dryer Monitoring

Process  
Control

- Data Logging => Where + When + Who
- Report

Safety & Performance





**ColorDry™**  
XL3000  
with SENTINEL™  
TECHNOLOGY

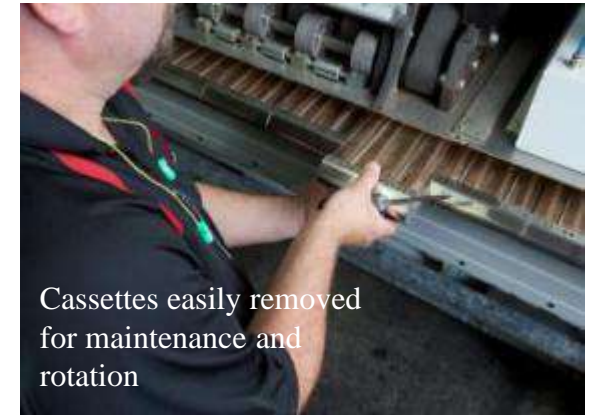
COLOR SELLS



6 inch / 15 cm cassettes



Width & Zone Control



Cassettes easily removed  
for maintenance and  
rotation



Manuel Drop Down



Power Drop Down

**Safety & Performance**

**JB**®  
JB MACHINERY



**ColorDry™**  
**XL3000** WITH SENTINEL™ TECHNOLOGY



**SENTINEL™** - Maximized Safety & Accountability

**LED Light Curtain** - Sensing Any Intrusion

- Entire coverage of the drying surface
- 5mm Above guide rails / glass

**Flutter Effect End Caps** - Ensuring Sentinel Paper Debris Detection.



**Safety & Performance**

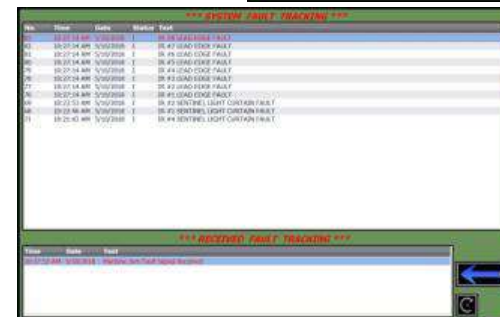


- 
- This image shows a close-up of the control panel and the conveyor belt of a 1000mm wide belt scale. The control panel features a red emergency stop button and a green start button. The conveyor belt is made of metal and has a series of rollers.

- What, Where, When occurred

- Accountability – Who and When

- Comprehensive reporting



## Safety & Performance





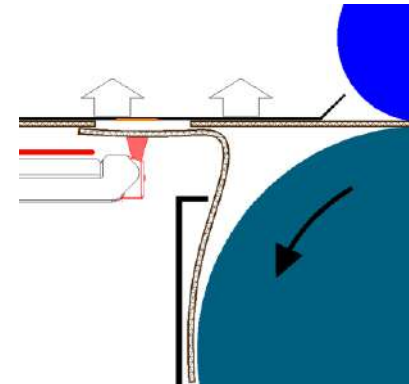
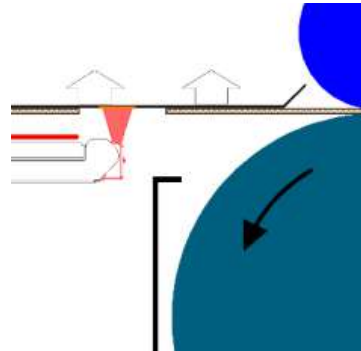
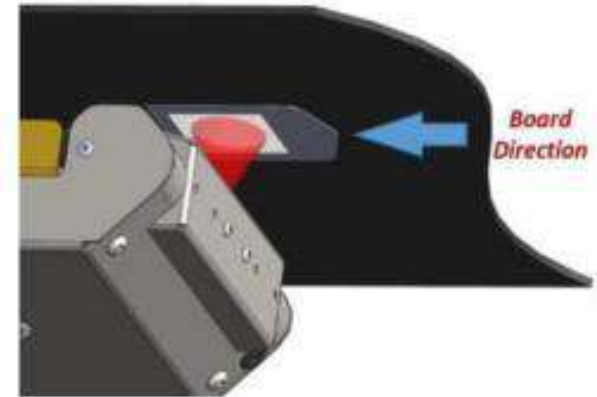
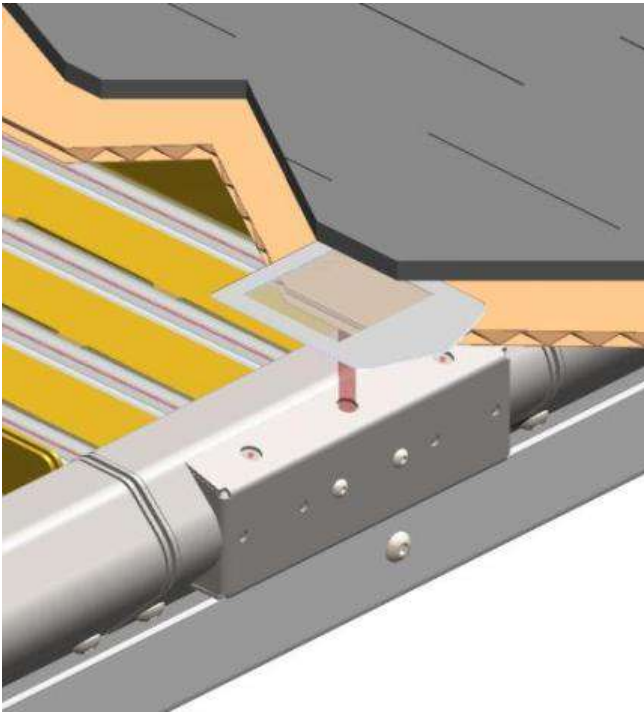


**ColorDry™**  
**XL3000** with SENTINEL™  
TECHNOLOGY



## SENTINEL™ - Maximized Safety & Accountability

- LESD Lead Edge Sheet Detection
- Detecting Wrapped Sheets
  - For Fixed Frame Machines



**Safety & Performance**





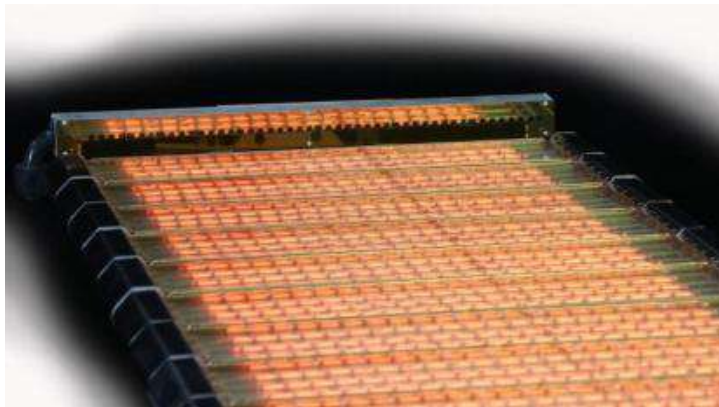


COLOR SELLS



## SENTINEL™ - Maximized Safety & Accountability

- LED Light Curtain
- RFID Reset
- LESD Lead Edge Sheet Detection



Detection and Suppression  
Partnering to Optimize Safety



Safety & Performance



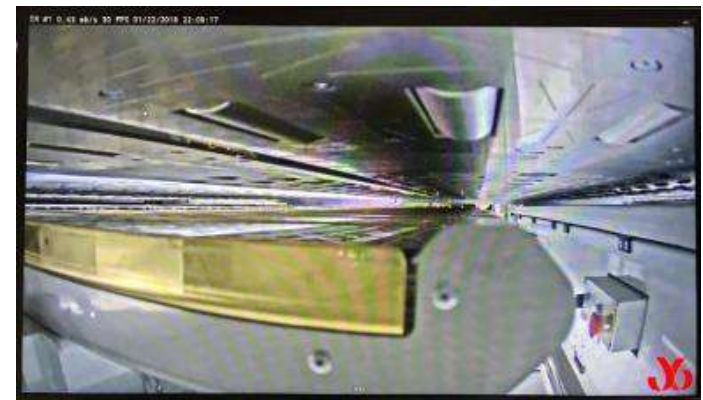


**ColorDry™**  
XL3000 WITH SENTINEL™ TECHNOLOGY

COLOR SELLS

## VISIONMASTER – In Press Dryer Inspection and Monitoring

- Remote RFID Reset (Not Available on All Machines)
- Real Time Dryer Inspection & Monitoring
- Digital Video Recording
  - Incident History Review



Safety & Performance



**ColorDry™**  
**XL3000** with SENTINEL™  
TECHNOLOGY

COLOR SELLS

## VisionMaster™ & XL3000 Control Console

VisionMaster Monitor

Diagnostic Beacon  
Green – Dryer ready  
Amber – Dryer not ready

HMI operator interface

Supplied with PC mouse  
and keyboard

PC for VisionMaster and  
Digital Video Recording

RFID Reset



**Safety & Performance**



*Intelligent Power Management* COLOR SELLS

## *Power Monitoring and Reporting*

### Features

- Records and Reports Power Consumption by Order



### Advantage

- Records Cost to Power the Dryers for Specific Orders
- Records: Job Number / Date Run / Job Duration



### Benefits

- Accurate Cost Estimating by Order
- Reduction in Operational Costs



Optimizing the Process







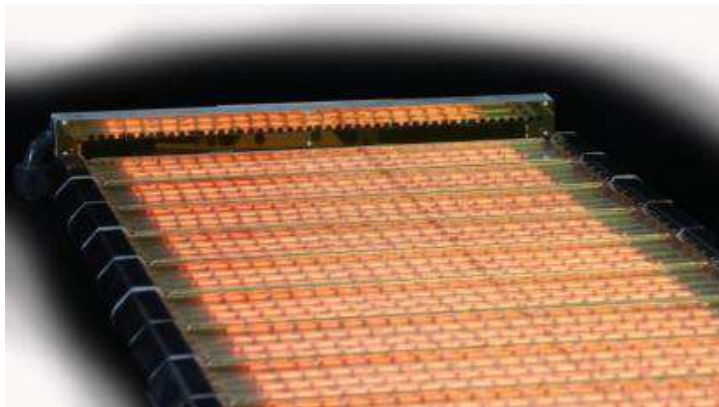
COLOR SELLS

## **VISIONMASTER:**

- In Press Dryer Inspection and Monitoring

## **INTELLIGENT POWER MANAGEMENT:**

- In Press Dryer Inspection and Monitoring



Dryer Inspection and Power  
Monitoring, Partnering  
to Optimize Performance

**Safety & Performance**





**ColorDry™**  
XL3000  
with SENTINEL™  
TECHNOLOGY

**ColorCure®**  
ColdUV™



Promote and Protect





**ColorDry™**  
XL3000  
with SENTINEL™  
TECHNOLOGY

## Trends & Challenges

**ColorCure™**  
ColdUV™



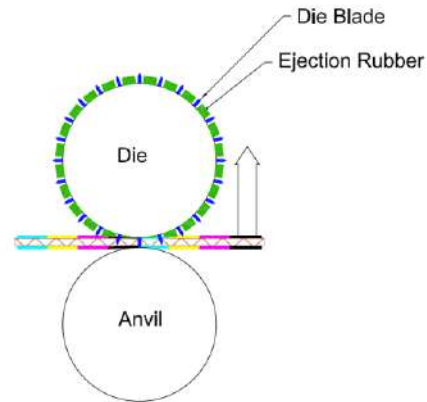
Promote and Protect



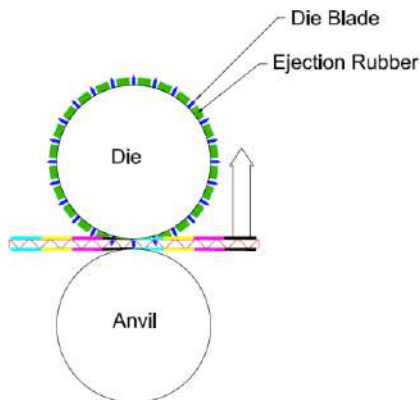
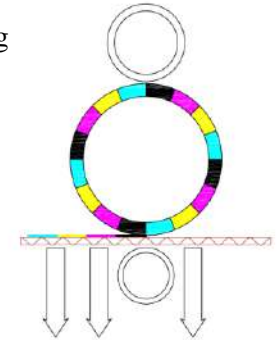
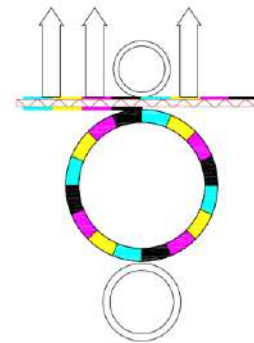
COLOR SELLS

## Trends & Challenges

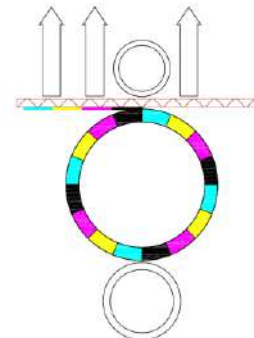
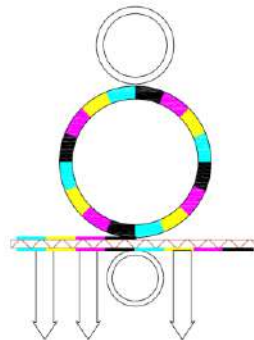
### Inside Outside RDC



Top Bottom Printing



Bottom Top Printing



Promote and Protect





***Drying: Top and/or bottom printing in-line and the need for drying.***

Productivity / Quality – Dryers make it possible to run at stated press speeds when printing white top, semi or fully coated papers (see JB Fine Printing Guidelines).

Productivity / Quality – Anvil cover marking and smearing is very common when printing on all papers if dryers are not employed – leading to excess downtime for cleaning/grinding.

Quality – Ink color vibrancy and gloss will be greatly enhanced when using dryers.

Quality – Without dryers the colors can bleed causing color bleed at the ink traps

***Drying: Top and/or bottom printing in-line and the greater need for drying.***

It is vital that the top printed colors are fully dried before passing to the bottom print stations to avoid smearing or marking from the vacuum transfer plates.

It is vital that the top printed colors are fully dried to avoid the potential of ink build-up on die cutting knives potentially causing sheet jams, dirty cutting and marking.

It is vital that the top printed colors are fully dried to avoid the potential of die cut ejection rubbers marking and defacing the printed work, due to the stresses created at the ink surface when die cutting.



COLOR SELLS

## Trends & Challenges

Inside Outside 2 over 4-UV RDC



Promote and Protect





**ColorDry™**  
XL3000  
with SENTINEL™  
TECHNOLOGY

**ColorCure™**  
ColdUV™



## Drop In and Stand Out

New Drop-In Products Increase Performance and Expand Offerings



### GraphiVac

Transfer Section with Final Flexo Dryer

JB Machinery and SUN Automation offer a self-contained stand-alone drying unit



- ▶ Maximize production and finishing speeds
- ▶ Improve print quality, uptime, and safety
- ▶ Achieve highest performance for end-of-process drying
- ▶ Generate up to 100% increase in speed
- ▶ Eliminate ink smear created by die cutting
- ▶ Ensure board is free from the last print nip prior to entering die cut nip

### Spectrum® Inside Print

Color Units for a Variety of Makes & Models

Retrofitted to most machines, allowing graphics on inside of box

- ▶ SunTrac® Vacuum Transfer system permits accurate sheet control
- ▶ Specific board caliper settings within .001"(.025 mm)
- ▶ Harmonic Drive digital register for maintenance-free operation
- ▶ ColorMaster or AccuPrint® blade system controls precise ink metering
- ▶ Self-contained controls for easy installation and maintenance
- ▶ Available room for IR drying



Available for existing machine applications. Get a quote today.

[sunautomation.com](http://sunautomation.com)  
1-410-472-2900

FEEDING

PRINTING

CONVERTING

SUPPORT



Promote and Protect



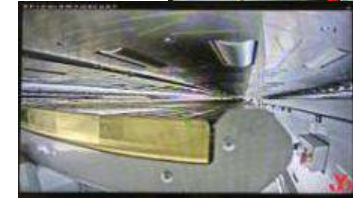
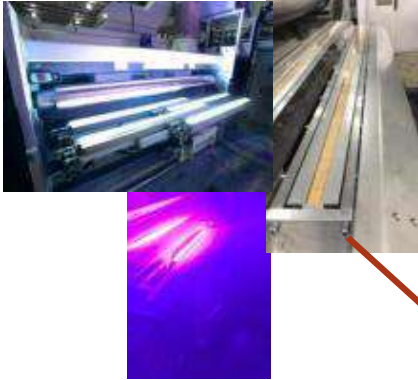
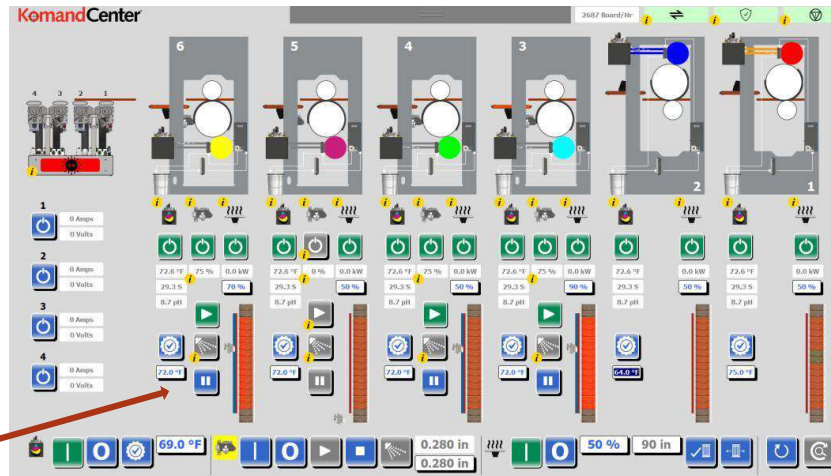




**KomandCenter**<sup>®</sup>  
a fully comprehensive control interface

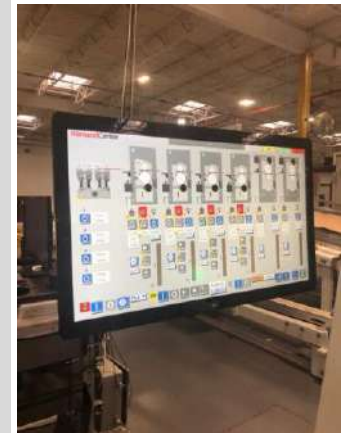
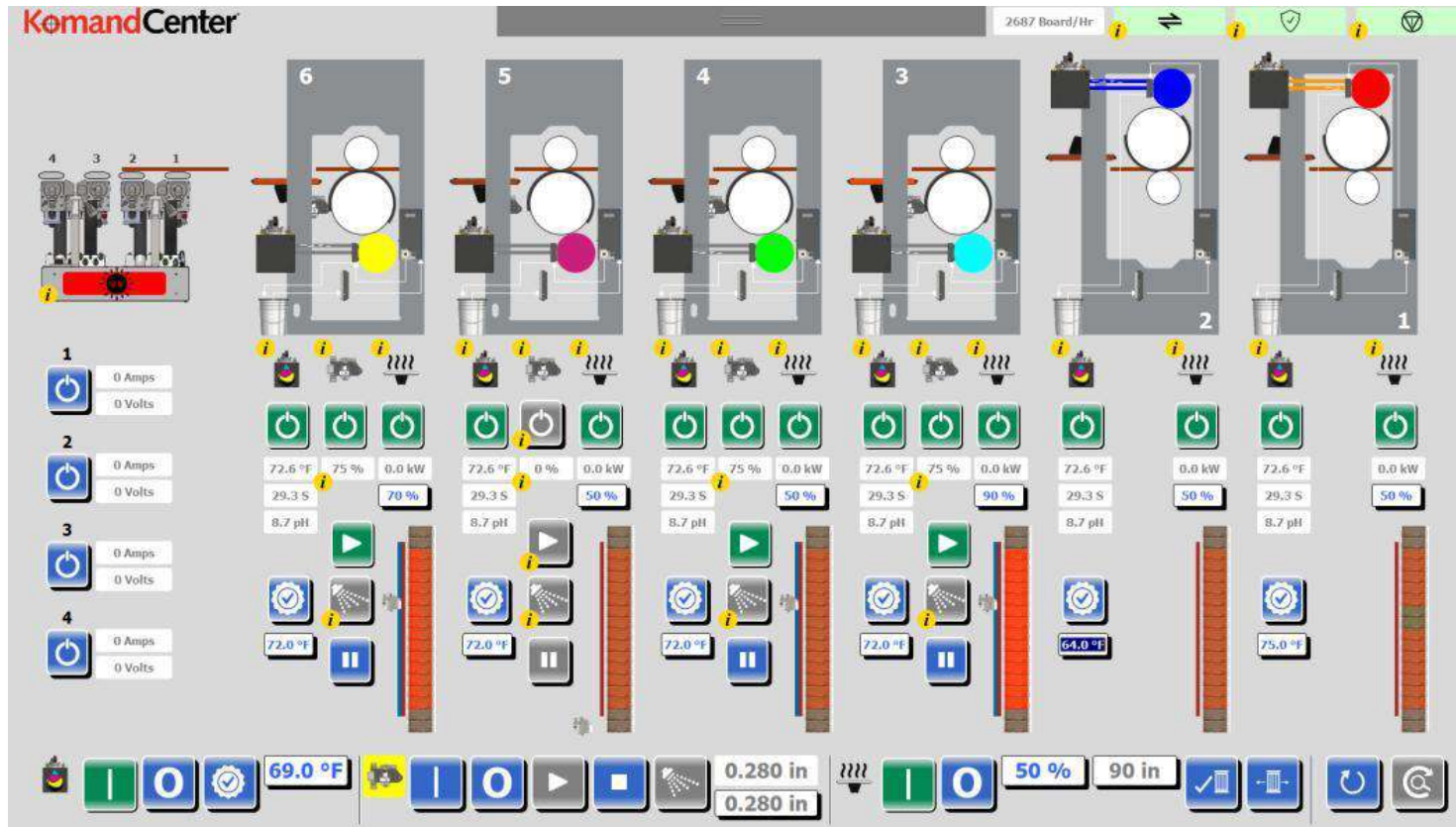
Optimizing the Process

## JB Centralized Equipment Control Dashboard





### JB Centralized Equipment Control Dashboard





COLOR SELLS

---

**Thank you for your time!**



JB MACHINERY