



KleenPlate® 3.0
auto plate wash & print defect eliminator

Optimizing the Process



***KleenPlate 3.0 Delivering
Productivity, Quality & Payback***





KleenPlate 3.0
auto plate wash & print defect eliminator

Productivity & Quality

❑ *So why KleenPlate 3.0?*

Significant down time is experienced for plate washing when direct printing on corrugated board, due to production interruptions, the need to remove printing defects and correct color variation. Automating plate washing and eliminating printing defects *will* maximize uptime, minimizing printing defects and color variation

KleenPlate 3.0 Wet and DryKleen

❑ *Maximizing Productivity*

❑ *Optimizing Quality*

Optimizing the Process





KleenPlate 3.0
auto plate wash & print defect eliminator

Productivity & Quality

□ *So why KleenPlate 3.0?*

WetKleen - Maximized Productivity:

Automatic On Demand WetKleening Pre, During & Post Printing

- *Printing Plates WetKleened in approximately 5 minutes*
- *Minimized if not eliminated waste sheets*
- *Minimized plate wash down time*

DryKleen - Optimizing Quality & Productivity

Automatic & continuous DryKleening Minimizing if not eliminating:

- *Washing plates during production*
- *Paper Dust Defects*
- *Color Variation and Dot Gain*
- *Waste Sheets*
- *Paper Jams*
- *Reduced anilox roll feedback & cleaning*



Optimizing the Process



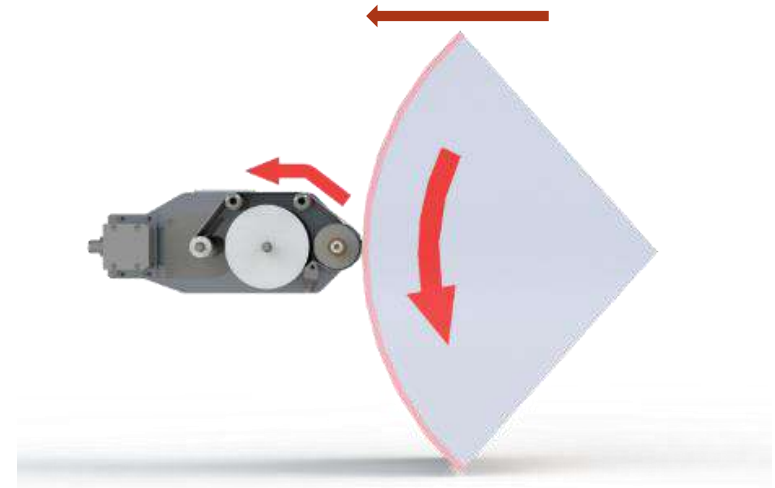
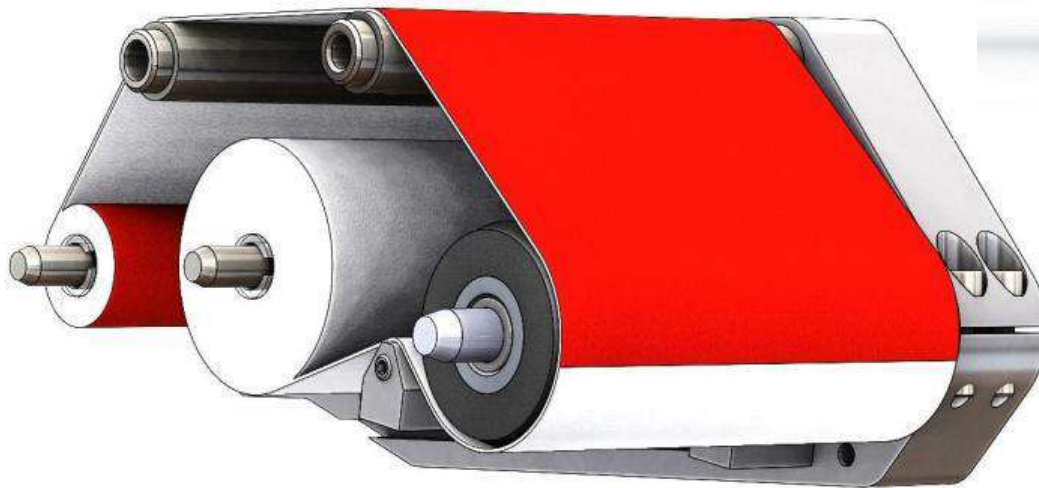
KleenPlate 3.0
auto plate wash & print defect eliminator

Productivity & Quality

How does it work?

Productivity & Quality

- ☐ *Automatic Plate Washing*
- &*
- ☐ *Printing Defect Elimination*



Optimizing the Process

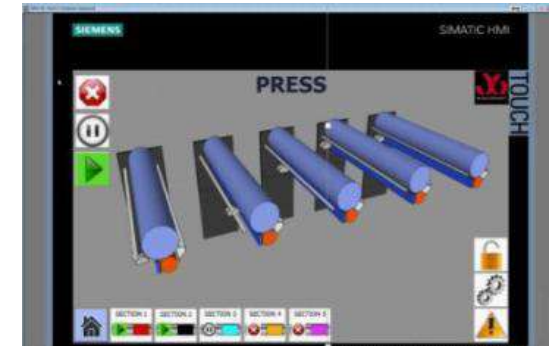


KleenPlate 3.0
auto plate wash & print defect eliminator

Productivity & Quality

❑ *KleenPlate 3.0 Saving Cloth & Time*

- *The On-Demand WetKleen Features:*
- *WetKleen Pre Production*
 - WetKleen On-Demand energized – Active plate cylinders come off impression
 - Plate cylinders rotate at “WetKleen speed”
 - WetKleen cycle completed machine automatically returns to printing mode
- *WetKleen During Production*
 - WetKleen On-Demand energized - Press stops feeding sheets.
 - Active plate cylinders come off impression
 - Plate cylinders rotate at “WetKleen speed”
 - Active dryers powered down to standby mode.
 - WetKleen cycle completed machine automatically returns to printing mode
- *WetKleen Post Production*
 - WetKleen On-Demand energized – Active plate cylinders come off impression
 - Plate cylinder rotates at “WetKleen speed”
 - Ink wash system activated
 - Plates AND ink system are washed simultaneously!
 - WetKleen cycle completed plates removed from press to be stored
 - Please note: For heavy solids it may be necessary to remove plates for a complete wash



Optimizing the Process

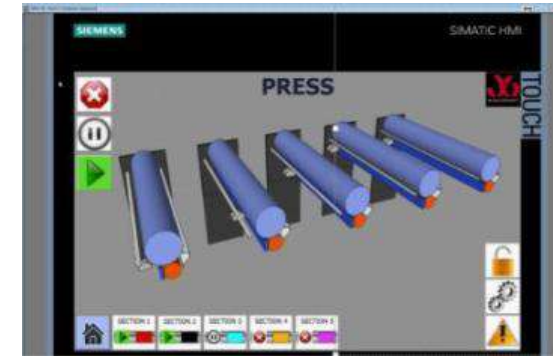


KleenPlate 3.0
auto plate wash & print defect eliminator

Productivity & Quality

□ *KleenPlate 3.0 Features*

- *Auto plate thickness adjustment*
 - KleenPlate pressure automatically set to plate thickness
 - Precise fine tuning pressure adjustment in 0.00762mm / 0.0003inch increments
- *Jam detection and plate damage prevention*
 - Automatic pressure control avoids over pressure to the printing plate.
 - KleenPlate pressure overload due to sheet wraparound or operator error is detected



Optimizing the Process



KleenPlate 3.0
auto plate wash & print defect eliminator

Productivity & Quality



Before *KP 3.0 WetKleen*



After *KP 3.0 WetKleen*

Optimizing the Process



KleenPlate 3.0
auto plate wash & print defect eliminator

Productivity & Quality

Case Study

Job: 4 Colors, 6,000 sheets, printed at 5,000 sph

Equipment: 6 color 924 FFG

Substrate: White Top board stock.

Run condition without KleenPlate 3.0: Manually wash plates pre-printing, every 1,500 sheets to remove printing defects and post printing

Run condition with KleenPlate 3.0: WetKleen plates pre-printing and post printing only.
DryKleen plates continuously.



Post Print WetKleened Plates

Representing: Productivity gain of ~30% and Waste reduction of >90%

Please review Manual vs Brush vs KleenPlate 3.0 Comparison Table

Optimizing the Process



KleenPlate 3.0
auto plate wash & print defect eliminator

Optimizing the Process

Manual vs Brush vs KleenPlate 3.0® - Plate cleaning

Job: 6,000 sheets, semi-coated paper, 4 colors, printed at 5,000 sph

	Manual 2-Persons	Auto Brush Cleaner	KleenPlate 3.0
Set-up time	N/A	Unknown	Automatic w/recall
Make-ready wash	~10 minutes	~5 minutes	~5 minutes
Waste sheets	10 - 15	10 - 15	<5
Print defect interruptions	~each 1,500 sheets 10 mins x 3 for 30 mins.	~each 1,500 sheets / 30 secs x 3 for 1.5 mins.	Zero interruptions
Waste sheets	30 - 45	30 - 45	Zero waste sheets
Post production wash before plate removal	~10 minutes	~5 minutes	~5 minutes
Waste sheets	Zero	Zero	Zero
Lost prod. minutes	~50 minutes	~11.5 minutes	~10 minutes
Job time @ 5,000 sph	~122 Minutes	~83.5 minutes (~30% efficiency gain)	~82 minutes (~30% efficiency gain)
Wasted Sheets	50 - 75	50 - 75	<5

Note: The above data does not take into account the advantages and quality benefits that KleenPlate 3.0 provides



KleenPlate 3.0
auto plate wash & print defect eliminator

Productivity & Quality

□ *So why KleenPlate 3.0?*

WetKleen - Maximized Productivity:

Automatic On Demand WetKleening Pre, During & Post Printing

- *Printing Plates WetKleened in approximately 5 minutes*
- *Minimized if not eliminated waste sheets*
- *Minimized plate wash down time*

DryKleen - Optimizing Quality & Productivity

Automatic & continuous DryKleening Minimizing if not eliminating:

- *Washing plates during production*
- *Paper Dust Defects*
- *Color Variation and Dot Gain*
- *Waste Sheets*
- *Paper Jams*
- *Reduced anilox roll feedback & cleaning*



Optimizing the Process



KleenPlate® 3.0
auto plate wash & print defect eliminator

Optimizing the Process



***KleenPlate 3.0 Delivering
Productivity, Quality & Payback***





KleenPlate 3.0
auto plate wash & print defect eliminator

Optimizing the Process



***KleenPlate 3.0 Delivering
Productivity, Quality & Payback***

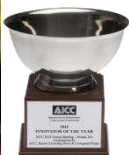
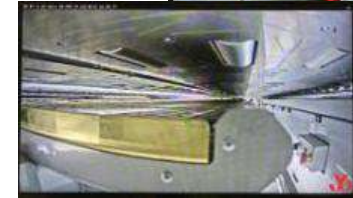
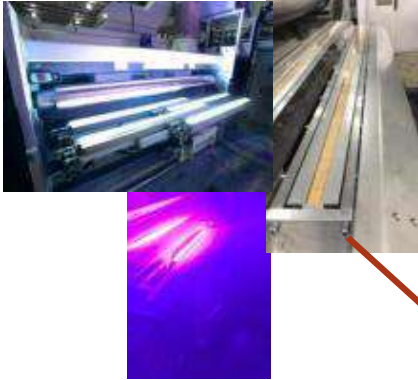
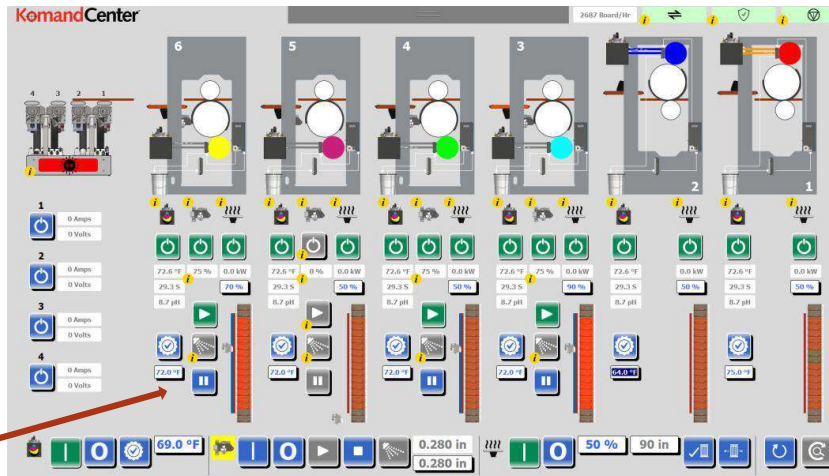




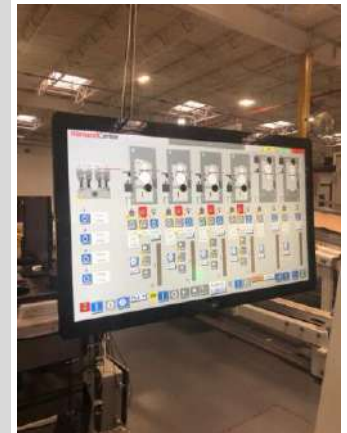
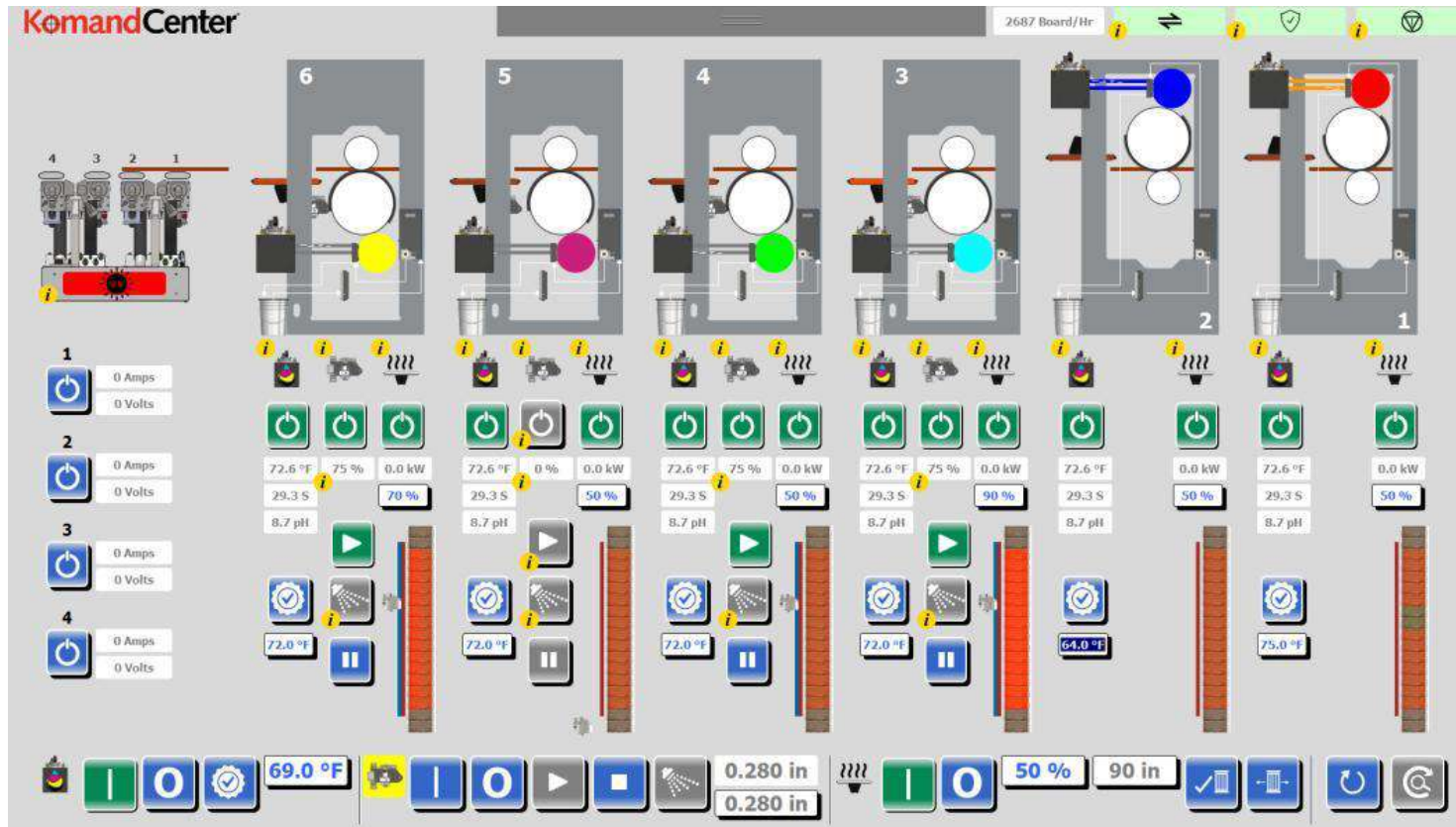
KomandCenter®
a fully comprehensive control interface

Optimizing the Process

JB Centralized Equipment Control Dashboard



JB Centralized Equipment Control Dashboard





KleenPlate 3.0
auto plate wash & print defect eliminator

COLOR SELLS

Thank you for your time!



JB MACHINERY